



LA CARRIERS, LLC

BBL 4000 STEEL COVERED-HOPPER BARGE

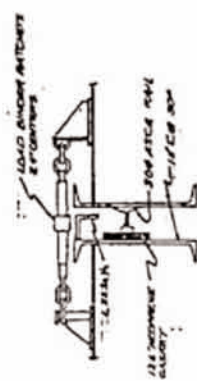
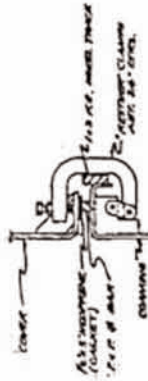
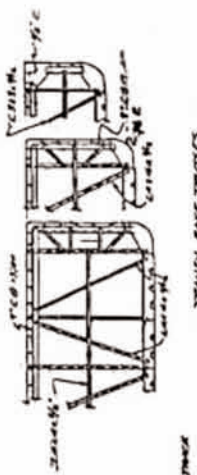
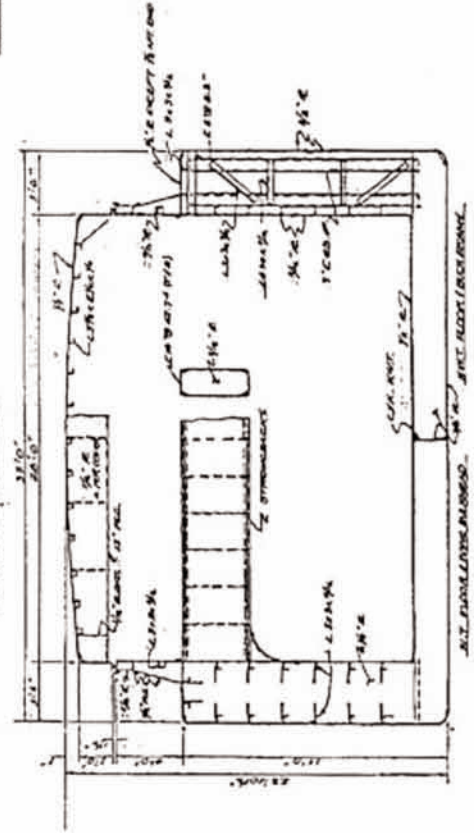
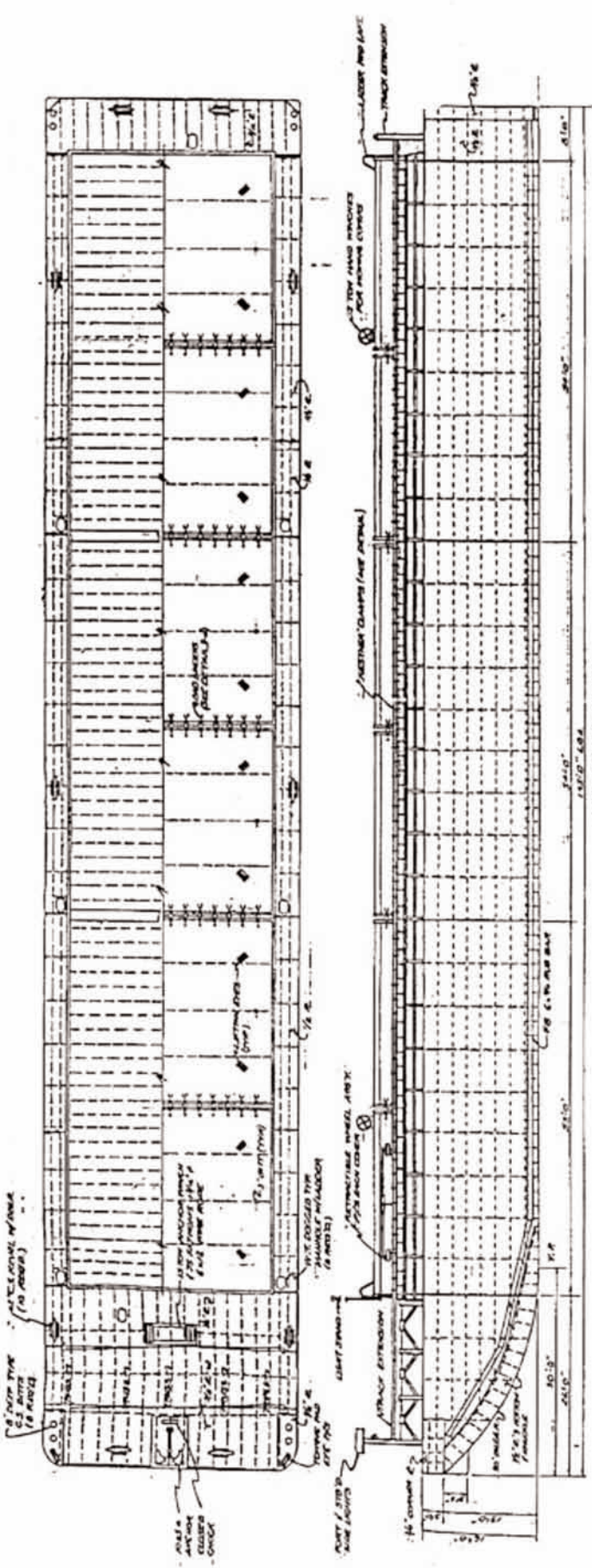


SPECIFICATIONS:
 Official Number 531932
 Type Steel Hopper
 Year Built 1971
 Gross Tonnage 1,244
 Net Tonnage 1,244
 Hull Shape Integrated Rake/Box

Length 195'
 Beam 35'
 Depth 16'
 Capacity 2,080
 Winch 20 ton Anchor Winch
 ABS Classification Number 7108992
 Port of Registry New Orleans, La

MEAN DRAFT	SHORT TONS OF CARGO	
	FRESH WATER	SALT WATER
2' 3/4"	---	0
2' 4"	0	11
2' 6"	42	53
3' 0"	142	156
3' 6"	243	259
4' 0"	343	259
4' 6"	443	464
5' 0"	543	566
5' 6"	643	669
6' 0"	743	771
6' 6"	844	875
7' 0"	945	978
7' 6"	1047	1083
8' 0"	1151	1189
8' 6"	1255	1295
9' 0"	1359	1402
9' 6"	1463	1509
10' 0"	1567	1615
10' 6"	1671	1722
11' 0"	1785	1838
11' 6"	1889	1945
12' 0"	1994	2052
12' 6"	2100	2161

with covers in place



"PROVISIONAL"
INTERNATIONAL LOAD LINE CERTIFICATE
 Issued under the provisions of the International Convention on Load Lines, 1966,
 under the authority of the Government of

UNITED STATES OF AMERICA
 by the American Bureau of Shipping

Name of Ship	Distinctive Number or Letters	Port of Registry	Length (L) as defined in Article 2(B)
BBL-400	531932	NEW ORLEANS, LA.	187' 2 3/8"

Freeboard assigned as:

A new ship
 An existing ship

Type of Ship:

- Type "A"
- Type "B"
- Type B with reduced freeboard
- Type B with increased freeboard

* Delete whatever is inapplicable

Freeboard from Deck Line

Tropical	3' 7 1/4 inches	(T)
Summer	3' 10 1/4 inches	(S)
Winter	4' 1 1/4 inches	(W)
Winter North Atlantic	4' 3 1/4 inches	(WNA)
Timber tropical	- (mm/inches)	(LT)
Timber summer	- (mm/inches)	(LS)
Timber winter	- (mm/inches)	(LW)
Timber winter North Atlantic	- (mm/inches)	(LWNA)

Load Line

3'	above (S)
Upper edge of line through center of ring	
3'	below (S)
5'	below (S)
:	above (LS)
:	above (S)
:	below (LS)
:	below (LS)

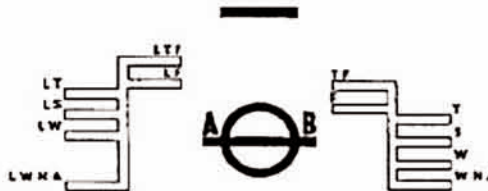
Note: Freeboards and Load Lines which are not applicable need not be entered on the certificate.

Allowance for fresh water for all freeboards other than timber 3 inches

Allowance for fresh water for timber freeboards _____ (mm/inches)

The upper edge of the deck line from which these freeboards are measured is: OPPOSITE TOP OF STEEL UPPER deck at side.

STABILITY HAS BEEN CHECKED
 AND FOUND SATISFACTORY
 PER USCG LETTER DATED 7
 APRIL 1980



CERTIFICATE IS VALID FOR
 UNMANNED OPERATION ONLY

Date of initial or periodical survey 21 JULY 2004

THIS IS TO CERTIFY that this ship has been surveyed and that the freeboards have been assigned and load lines shown above have been marked in accordance with the International Convention on Load Lines, 1966.

This certificate is valid until 21 JANUARY 2005 PENDING ISSUANCE OF NEW FULL TERM CERTIFICATE, subject to periodical inspections in accordance with article 14(1)(c) of the Convention.



Issued at STURGEON BAY, WI on 13 AUGUST 2004

The undersigned declares that he is duly authorized by the said Government to issue this Certificate.

P. E. BILLING Surveyor, American Bureau of Shipping

Notes: 1. When a ship departs from a port situated on a river or inland waters, deeper loading shall be permitted corresponding to the weight of fuel and all other materials required for consumption between the point of departure and the sea.

2. When a ship is in fresh water density the appropriate load line may be submerged by the amount of the fresh water allowance shown above. When the density is other than unity, an allowance shall be made proportional to the difference between 1.025 and the actual density.



ELB:ph
S-1

29 OCTOBER 2004

KADINGER MARINE SERVICES, INC.
ATTN: ACCOUNTS PAYABLE
401 EAST GREENFIELD AVENUE
MILWAUKEE, WI, 53204

**SUBJECT: "BBL-400" (ABSID 7108922)
RENEWAL**

Gentlemen,

Enclosed please find original of the following certificate(s):

- Load Line Certificate valid to: 31 MAY 2009
- Document of Compliance Cert. valid to: _____
- Safety Radio Certificate valid to: _____
- Safety Equipment Certificate valid to: _____
- Safety Construction Certificate valid to: _____
- (I)SPPC Certificate valid to: _____
- (I)OPP Certificate valid to: _____
With Supplement: _____

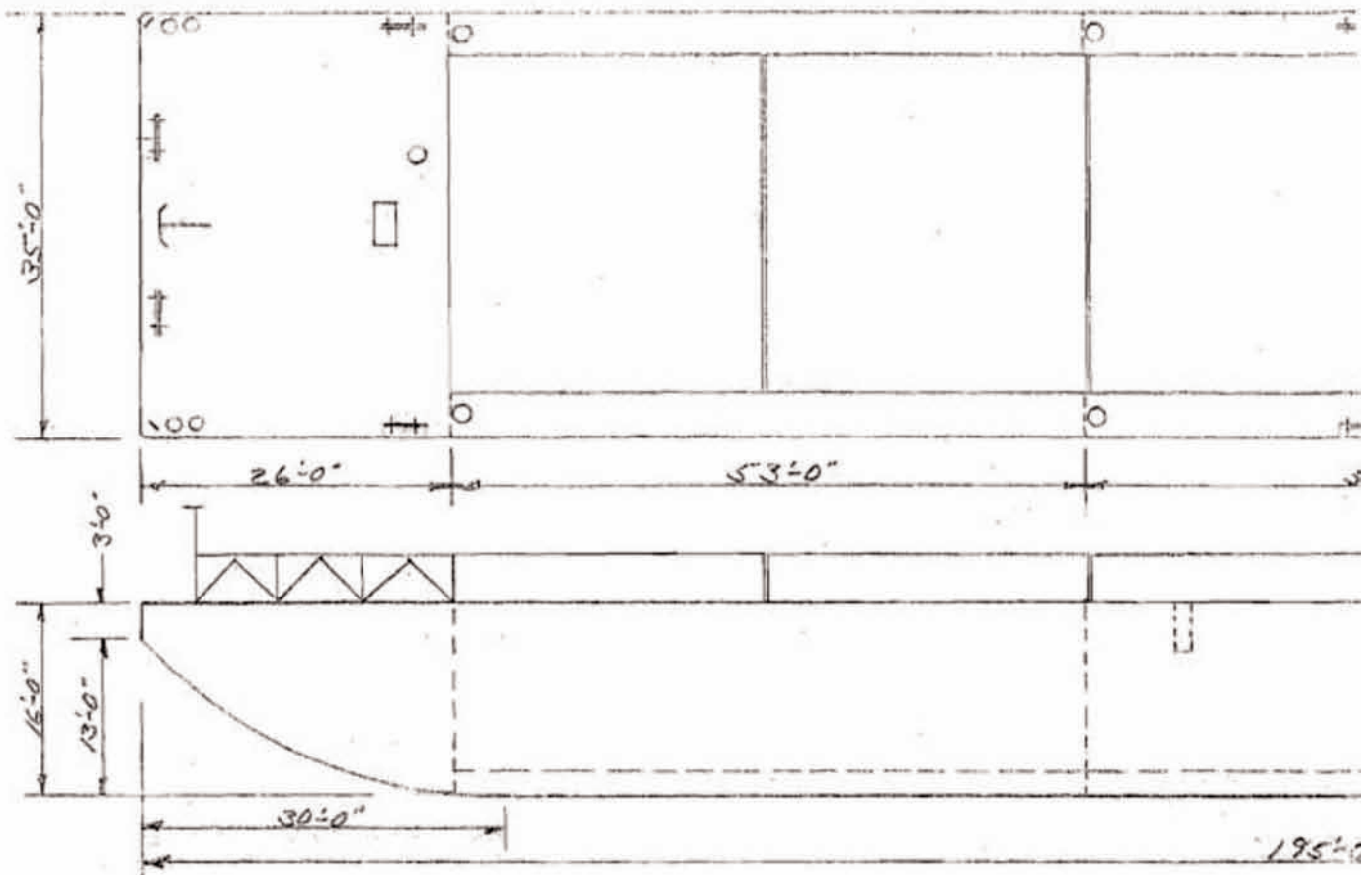


This certificate reflects the information in our files. The original is to be placed aboard the vessel. Please ensure that the previously issued certificate is destroyed.



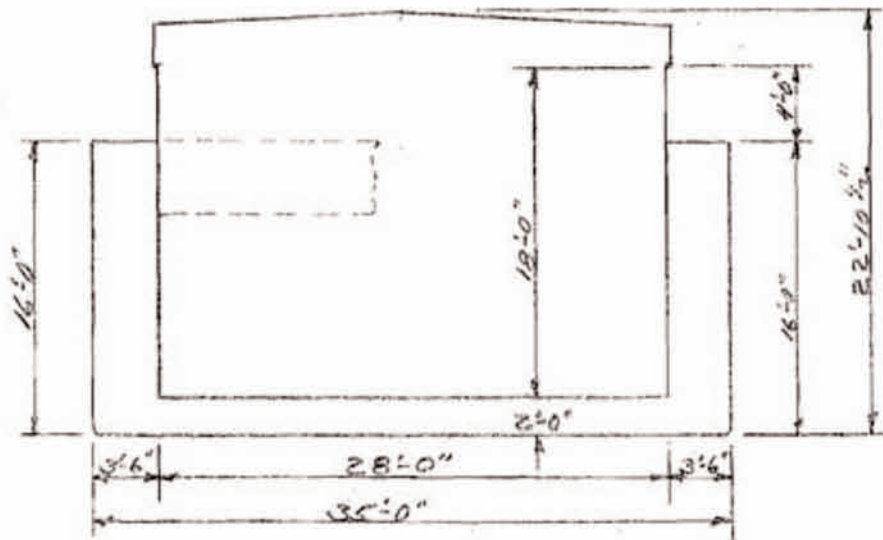
Very truly yours,

American Bureau of Shipping
Classification & Documentation Center



BARGE WT. ————— 435 SHORT TONS
 HOPPER CAPACITY — 81,200 CU. FT.

L & L MARINE SERVICE
BARGES P-20, P-21, P-22 & P-23



DRAFT IN FEET	CARGO
	FRESH WATER
2'-3 1/4"	-
2'-4"	0
2'-6"	42
3'-0"	142
3'-6"	243
4'-0"	343
4'-6"	443
5'-0"	543
5'-6"	643
6'-0"	743
6'-6"	844
7'-0"	945

